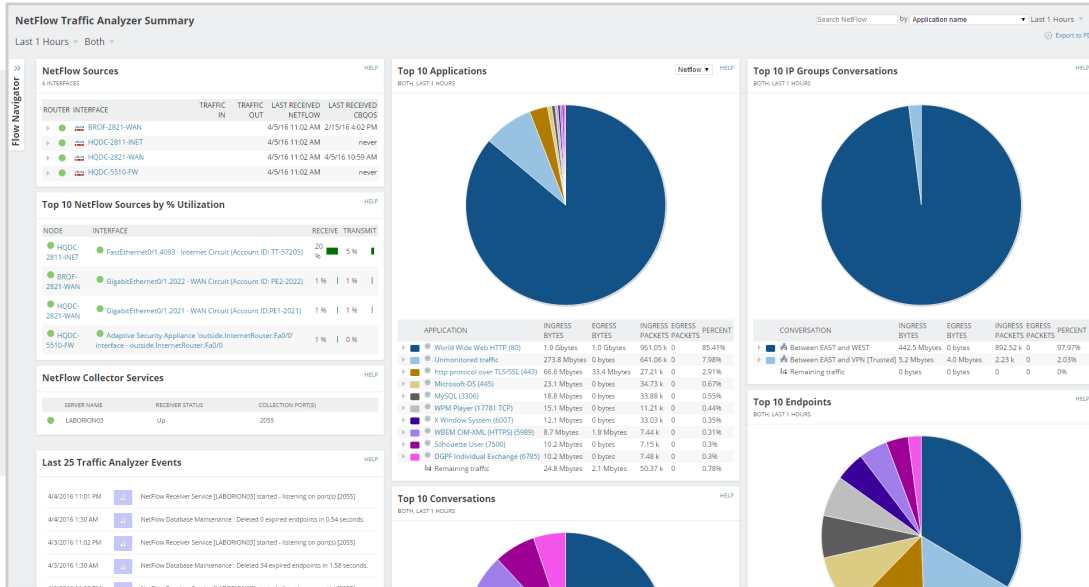


Netflow Traffic Analyzer

Real-Time Network Utilization And Bandwidth Monitoring



SolarWinds® NetFlow Traffic Analyzer (NTA) allows you to capture data from continuous streams of network traffic, and convert those raw numbers into easy-to-interpret charts and tables that quantify exactly how the corporate network is being used, by whom, and for what purpose. With SolarWinds NTA, it's easier than ever to collect and analyze Cisco® NBAR2 and NetFlow, Juniper® J-Flow™, IPFIX, sFlow®, Huawei NetStream™, and other flow data.

[DOWNLOAD FREE TRIAL](#)

Fully Functional for 30 Days

NETFLOW TRAFFIC ANALYZER AT A GLANCE

- » Monitors network bandwidth and traffic patterns down to the interface level
- » Identifies which users, applications, and protocols are consuming the most bandwidth
- » Highlights the IP addresses of top talkers
- » Explores historical IP flow conversations with up to one-minute granularity
- » Analyzes Cisco NBAR2 and NetFlow, Juniper J-Flow, IPFIX, sFlow, Huawei NetStream, and other flow data

FEATURES

Bandwidth Utilization Monitoring

Bandwidth Threshold Alerting

Delivers an instant alert notification, including a list of top talkers when an interface exceeds its bandwidth utilization threshold.

Bandwidth Usage by Application

Provides valuable insights into which applications are consuming the most network bandwidth, and tracks application traffic arriving from designated ports, source IPs, destination IPs, and even protocols.

Bandwidth Usage by IP Groups

Analyzes network traffic with custom overlapping IP address groups. Create your own IP address groups to view network traffic the way that you want to see it.

Network Traffic Monitoring and Forensics

Traffic Analysis Dashboard

Delivers a comprehensive, customizable view of your network traffic on a single pane of glass, allowing you to spot potential problems quickly with top ten views of network traffic data. Get to the root cause of bandwidth issues with an intuitive point-and-click interface.

Cross-stack Network Data Correlation

Accelerate identification of root cause by dragging-and-dropping network performance metrics on a common time line for immediate visual correlation across all of your network data.

Network Traffic Forensics

Enables you to drill down into any element's traffic using multiple views to get the perspective you're looking for. You can investigate and isolate excessive network bandwidth utilization and unexpected application traffic.

CBQoS Performance Views

Enables you to view network traffic segmented by Class of Service methods, measure effectiveness of your CBQoS policies, and quantify bandwidth consumption by class map.

Border Gateway Protocol

Enables you to set up customized views of internet traffic for ISPs and organizations to better understand how traffic is balanced across providers.

[DOWNLOAD FREE TRIAL](#)

Fully Functional for 30 Days

Flow-based Monitoring and Reporting

Multi-Vendor Device Support

- » Analyzes NBAR2, NetFlow v5, NetFlow v9, sFlow v2, v4, v5, IPFIX, J-Flow, and Huawei NetStream data
- » Supports devices from Cisco, Extreme Networks, HP®, Juniper, Nortel Networks, Huawei, and other leading vendors
- » Supports NetFlow traffic from VMware® vSwitch

Flow-based Reporting

Enables you to create in-depth network traffic reports with a few clicks, or schedule automatic weekly delivery to your team.

Flow Navigator

Enables you to create and access personalized network traffic views by filtering NBAR2, NetFlow, J-Flow, sFlow, IPFIX, and Huawei NetStream data.

Top-Talker Optimization

Determines which flows are representative of the majority of bandwidth usage. It stores those flows while disregarding flow data from users and applications that have a negligible impact on overall bandwidth. Boost overall performance of SolarWinds NTA up to 10x when capturing flows that represent 95% of the total network traffic.

SOLARWINDS NETFLOW TRAFFIC ANALYZER DOES MORE

Integrated Fault, Performance, and Configuration Management

Integrates with SolarWinds Network Performance Monitor (NPM), SolarWinds Network Configuration Manager (NCM), and SolarWinds User Device Tracker (UDT). This integration provides a unified solution for fault, performance, configuration management, automated device tracking, and switch port management.

Microsoft® Active Directory® Integration

Leverages your existing Active Directory user accounts to simplify login and account management.

[DOWNLOAD FREE TRIAL](#)

Fully Functional for 30 Days

SYSTEM REQUIREMENTS

HARDWARE	MINIMUM REQUIREMENTS
CPU	NTA Main Poller - Quad Core 3 GHz or better NTA Flow Storage Database - Quad Core 3 GHz or better
Memory	NTA Main Poller - 3GB NTA Flow Storage Database - 16GB
Hard Drive	NTA Main Poller - 3GB NTA Flow Storage Database - 20GB

SOFTWARE	MINIMUM REQUIREMENTS
OS	NTA Main Poller - Windows® Server 2008 R2 SP1, 2012, 2012 R2 NTA Flow Storage Database - Windows Server 2008 R2 SP1, 2012, 2012 R2
Database	Main - NTA shares the main SQL database with Network Performance Monitor Flow Database - NTA includes a Flow Storage Database

INTEGRATION WITH OTHER SOLARWINDS PRODUCTS

To deploy SolarWinds NetFlow Traffic Analyzer, SolarWinds Network Performance (NPM) needs to be installed on the same server

NOTE: The minimum server requirements listed assume default configuration. Significantly increasing the polling rate or flow collection rate could result in additional load on the server, which may require a larger CPU or additional memory.

TRY BEFORE YOU BUY. DOWNLOAD A FREE TRIAL!

Network traffic analysis has never been easier! Don't just take our word for it. Download a free 30-day trial and in about an hour, you can start analyzing network traffic and identifying which users, applications, and protocols are consuming the most bandwidth.

[DOWNLOAD FREE TRIAL](#)

Fully Functional for 30 Days

ABOUT SOLARWINDS®

SolarWinds provides powerful and affordable IT management software to customers worldwide, from Fortune 500® enterprises to small businesses, managed service providers (MSPs), government agencies, and educational institutions. We are committed to focusing exclusively on IT, MSP, and DevOps professionals, and strive to eliminate the complexity that our customers have been forced to accept from traditional enterprise software vendors. Regardless of where the IT asset or user sits, SolarWinds delivers products that are easy to find, buy, use, maintain, and scale while providing the power to address key areas of the infrastructure from on-premises to the cloud. This focus and commitment to excellence in end-to-end hybrid IT performance management has established SolarWinds as the worldwide leader in both network management software and MSP solutions, and is driving similar growth across the full spectrum of IT management software. Our solutions are rooted in our deep connection to our user base, which interacts in our THWACK® online community to solve problems, share technology and best practices, and directly participate in our product development process. Learn more today at www.solarwinds.com.

[DOWNLOAD FREE TRIAL](#)

Fully Functional for 30 Days

LEARN MORE

AMERICAS

Phone: 866.530.8100

Fax: 512.682.9301

Email: sales@solarwinds.com

EMEA

Phone: +353 21 5002900

Fax: +353 212 380 232

Email: sales@solarwinds.com

APAC

Tel : +65 6593 7600

Fax : +65 6593 7601

Email: sales@solarwinds.com

FEDERAL

Federal Reseller and System Integrator Sales

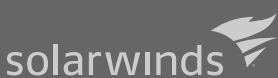
Phone: 877.946.3751

Fax: +353 212 380 232

Email: federalsales@solarwinds.com

For product information about SolarWinds products, visit solarwinds.com, call, or email.

7171 Southwest Parkway | Building 400 | Austin, Texas 78735



For additional information, please contact SolarWinds at 866.530.8100 or email sales@solarwinds.com.

To locate an international reseller near you, visit http://www.solarwinds.com/partners/reseller_locator.aspx

© 2017 SolarWinds Worldwide, LLC. All rights reserved.

The SolarWinds, SolarWinds & Design, Orion, and THWACK trademarks are the exclusive property of SolarWinds Worldwide, LLC or its affiliates, are registered with the U.S. Patent and Trademark Office, and may be registered or pending registration in other countries. All other SolarWinds trademarks, service marks, and logos may be common law marks or are registered or pending registration. All other trademarks mentioned herein are used for identification purposes only and are trademarks of (and may be registered trademarks) of their respective companies.